



# Syniti Replicate

## File Provider Setup Guide

Version 10.1



## Table of Contents

Replicating Data from a Relational Database to a File .....	3
Create a Source Connection.....	4
Enable Transactional Replication.....	6
Set Up Target Connection to a Flat File.....	7
Add Table Information to the Target Connection .....	10
Define the Replication.....	11
Run the Replication .....	15
Flat File Structure.....	16
Example File.....	16

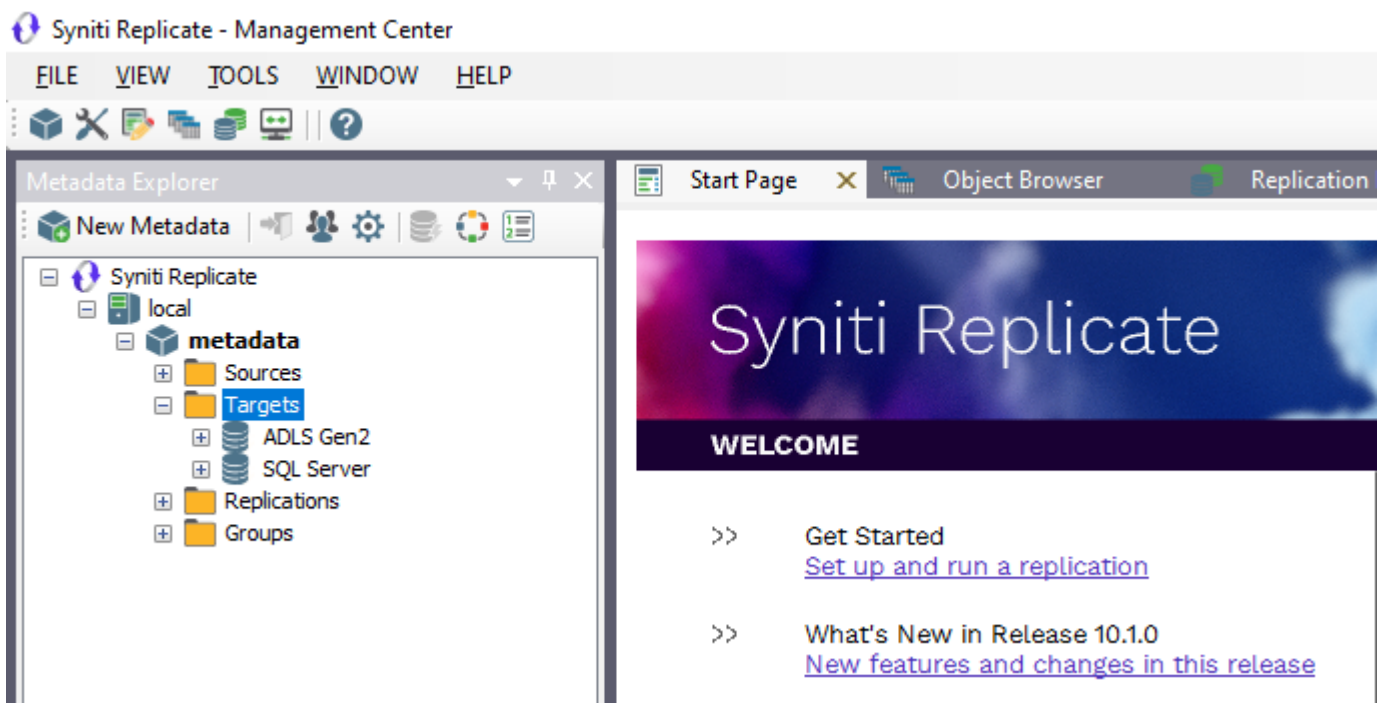
# Syniti Replicate

This guide describes how to set up your Syniti Replicate environment to replicate data to flat files. When replicating **from a relational database to a flat file**, Syniti Replicate allows you to replicate data in two different ways, or modes:

- **Refresh**  
A one-time complete replication from source table to flat file, according to replication settings and scripts. You can control the timing of the replication, identify the columns to be replicated and add scripts to transform data during replication.
- **One-way mirroring**  
A continuous update of a replicated table to a flat file based on changes to the source database that have been recorded in the database server log. You can define the replication settings to check the transaction log on the source database at regular intervals. Any changes found in the log would be applied to the target file.

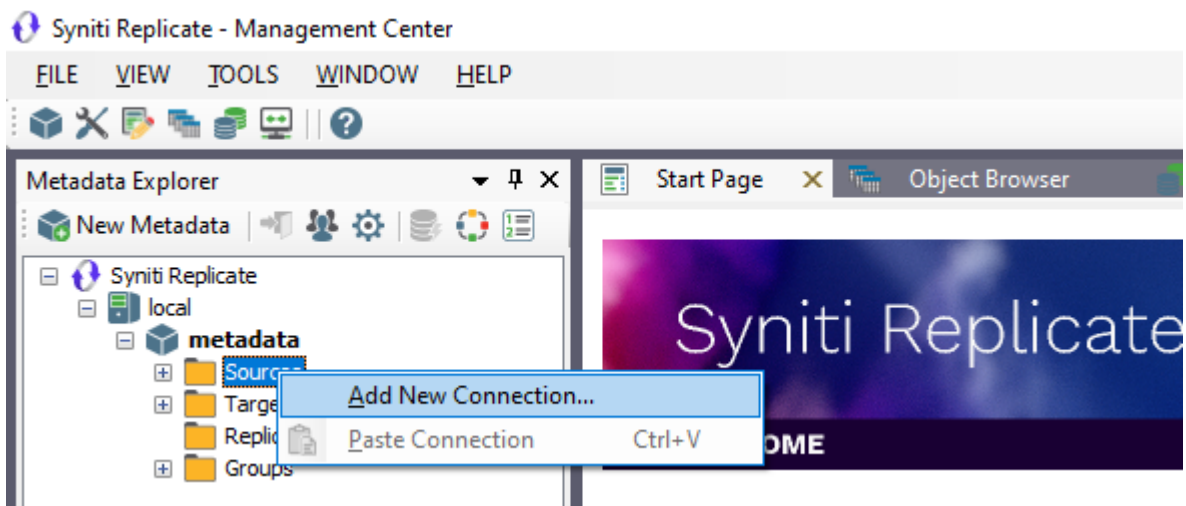
## Replicating Data from a Relational Database to a File

- Make sure you have [database connections via a .NET data provider](#) to the supported databases for source database tables.
- Start Syniti Replicate Management Center.  
Syniti Replicate provides a default database (Microsoft SQL Server CE) for your metadata, all the information that Syniti Replicate needs to store about your replication setup.

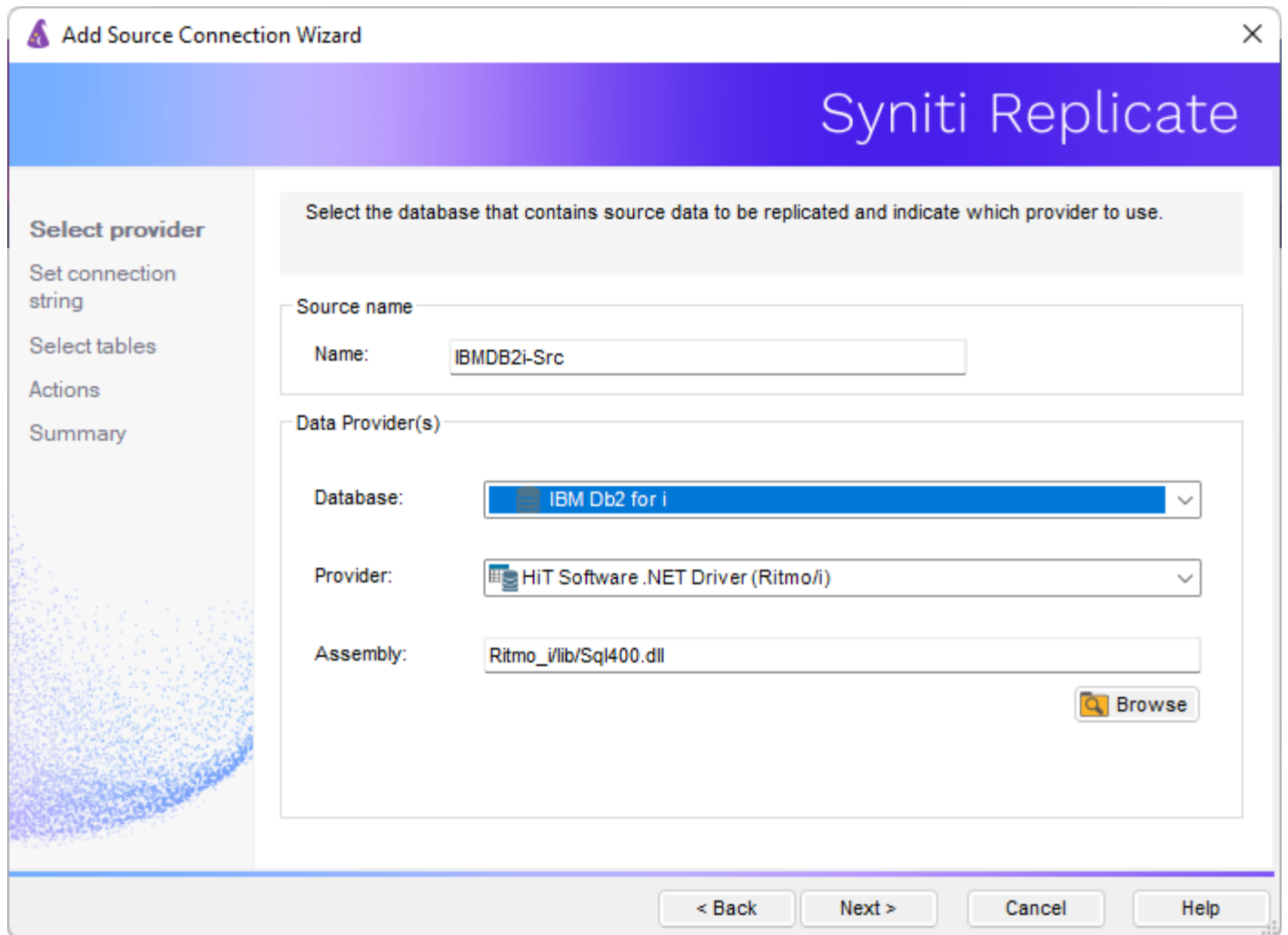


## Create a Source Connection

1. In the Metadata Explorer, expand the metadata node to view the **Sources** and **Targets** nodes.
2. Select the **Sources** node.
3. From the right mouse button menu, choose **Add New Connection**.

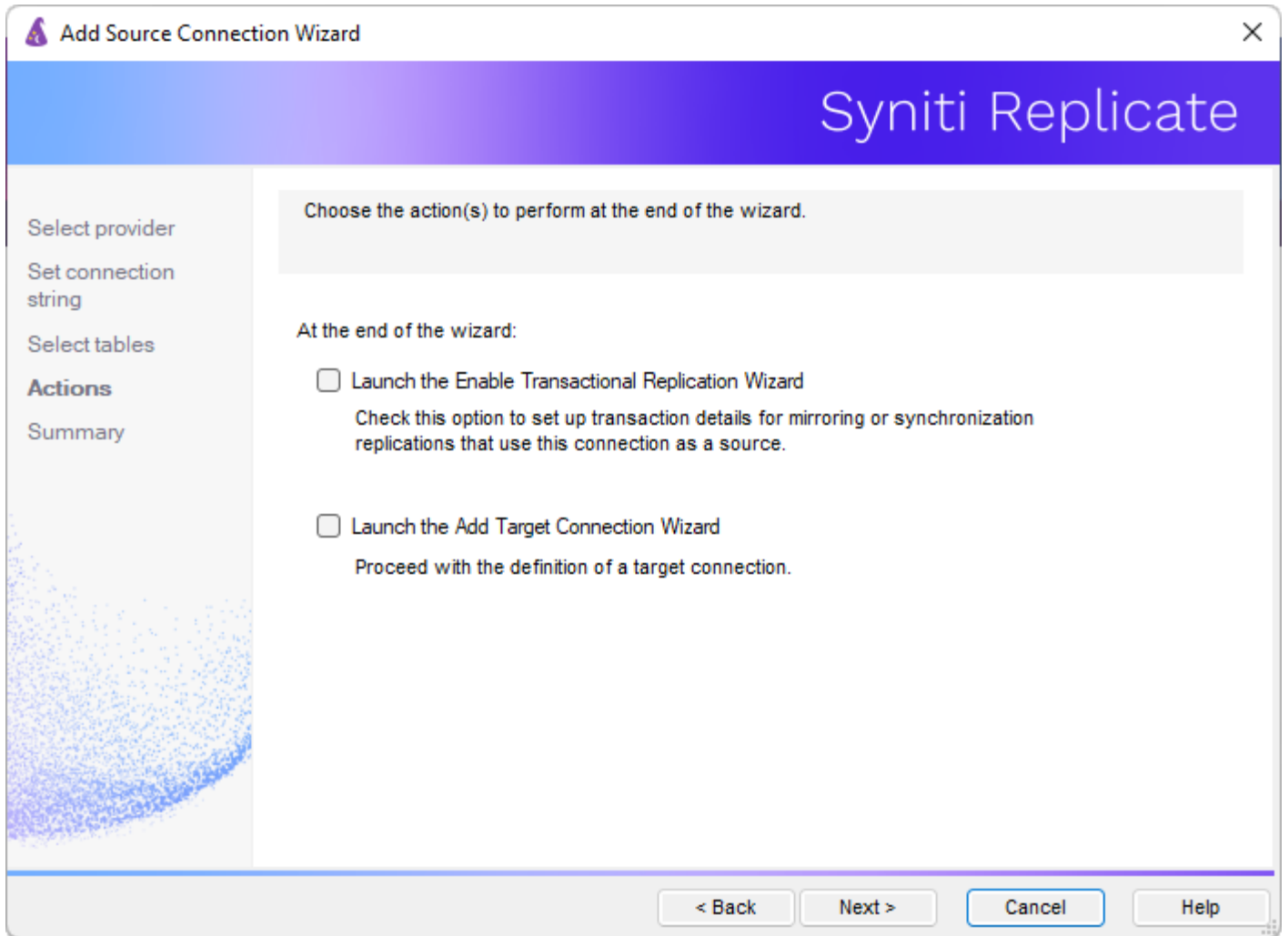


4. In the [Add Source Connection Wizard](#), follow steps to add a connection string and test the connection to the database.  
Check the Supported Provider List in the [Help Center](#) before entering a value in the **Assembly** field.



5. In the **Select Tables** screen, choose the tables that you plan to replicate.
6. In the **Actions** screen, check the option **Launch the Enable Transactional Setup Wizard**.





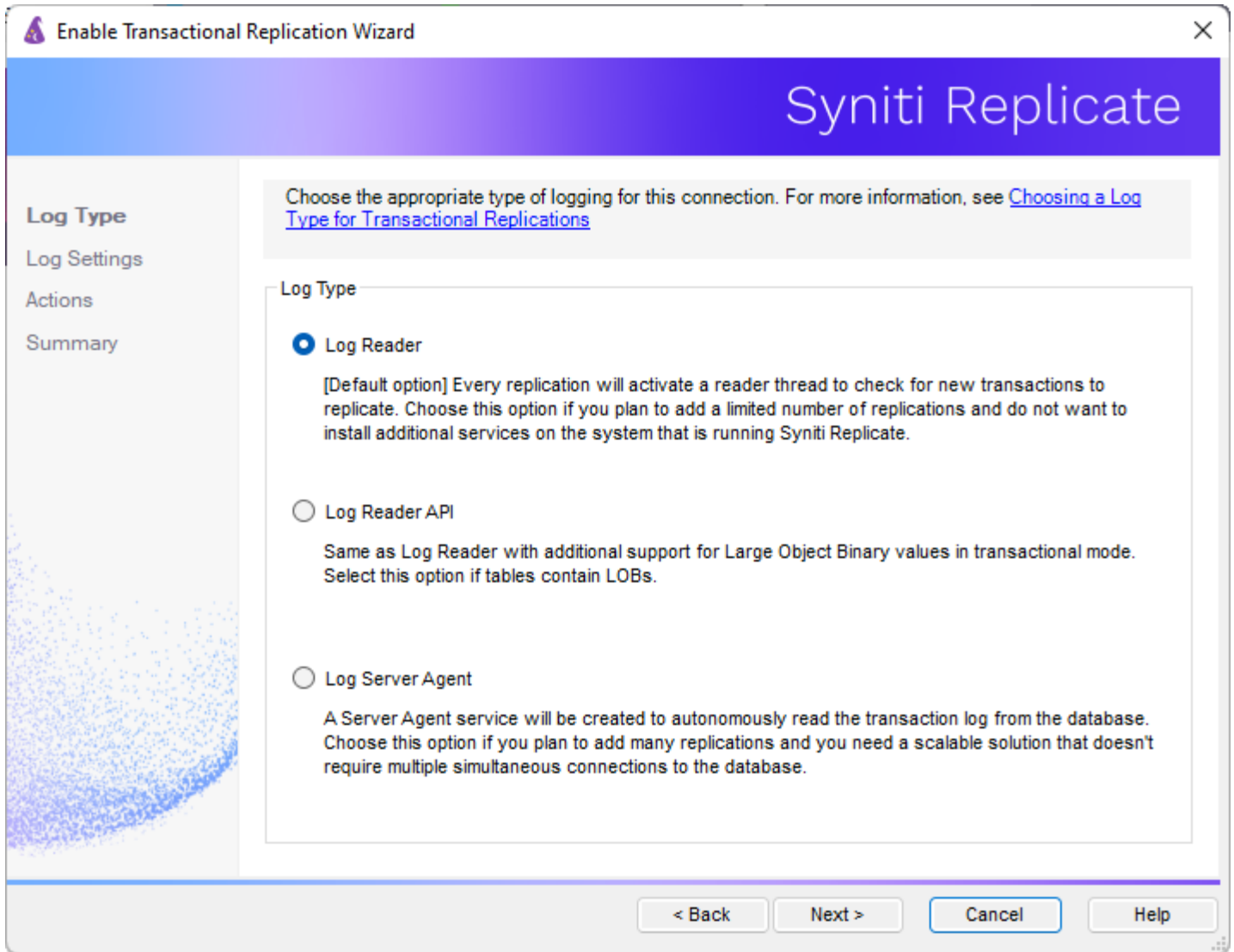
7. Complete the wizard.

## Enable Transactional Replication

This section assumes you are planning to replicate data to a flat file using mirroring (rather than Refresh) from a relational database. For Refresh replications, you do not need to complete the Enable Transactional Replication wizard. If you have checked the Source Connection wizard option to launch the Enable Transactional Replication wizard, follow the steps below. To open the wizard from the Management Center, choose the connection in the Metadata Explorer, then right-click to choose Transactional Setup > Enable...

In the **Enable Transactional Replication wizard**:

1. Select the type of transactional replication to use. The options depend on the source database and can include log reader, log server agent, triggers, plus log reader API (for IBM Db2 for i only). Check the help for more information on the best option.



2. Click **Next** to enter the log settings. The fields and appropriate values depend on the database and log type. You can obtain a setup guide for a specific relational database by making a request in the [Help Center](#).
3. Click **Next** to verify your settings against the source connection to the database. If any information is missing, you will not be able to proceed.
4. In the Actions screen, check the option to launch the **Add Target Connection wizard**.
5. Click **Next** to review your changes.
6. Click **Finish** to complete the wizard.

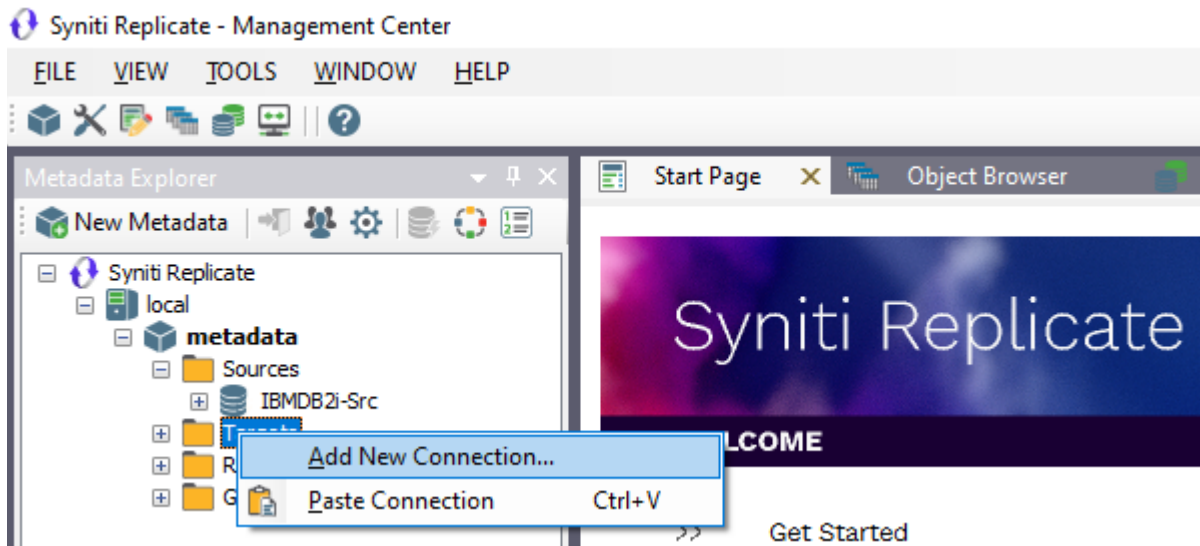
The source connection is now set up for transactional replications.

## Set Up Target Connection to a Flat File

This section assumes you have checked the **Enable Transactional Replication wizard** option to launch the Add Target Connection wizard. If not, to open the wizard from the Management Center, choose **Targets** in the

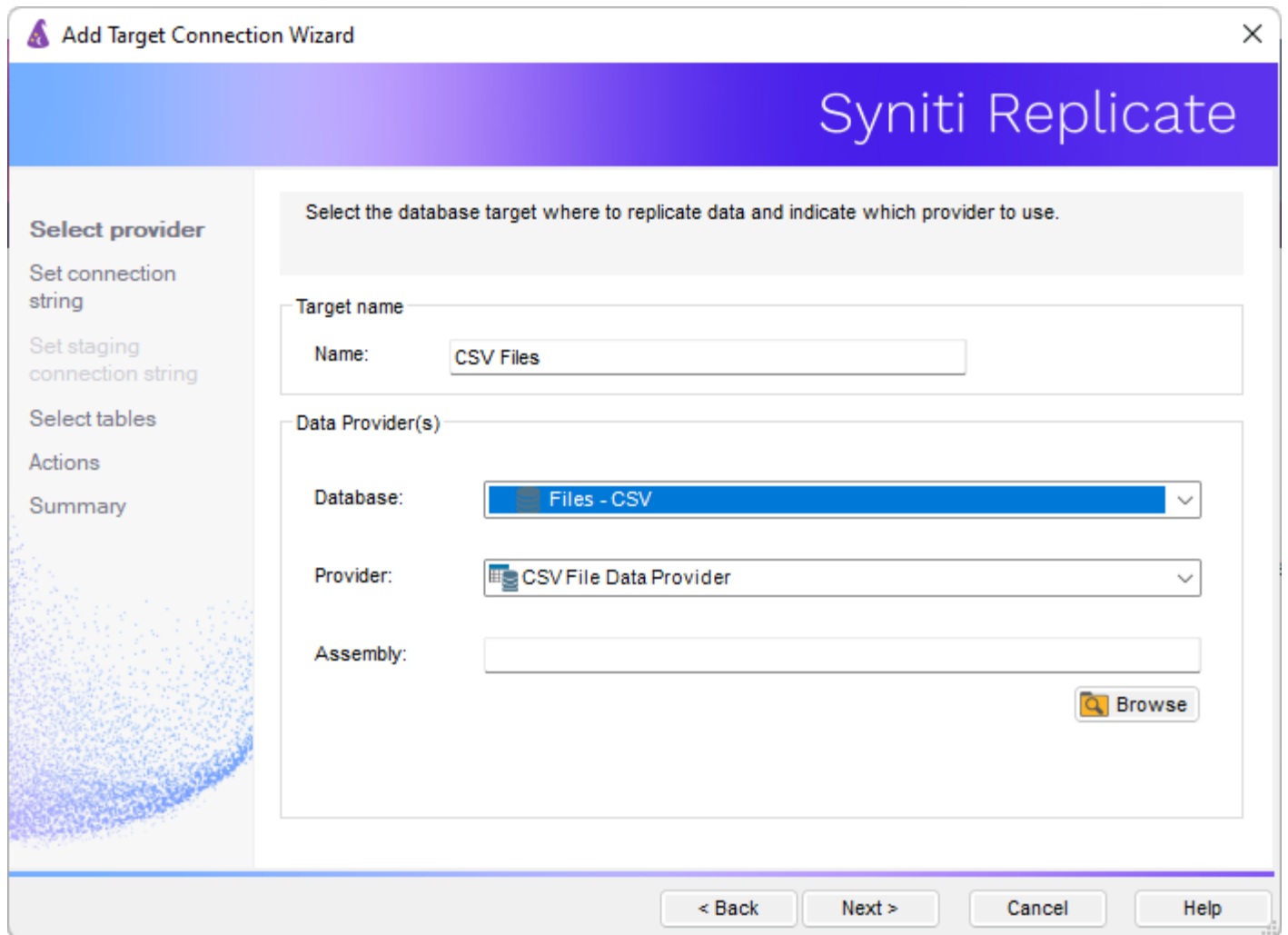
# Syniti Replicate

Metadata Explorer, then right-click to choose **Add New Connection...**

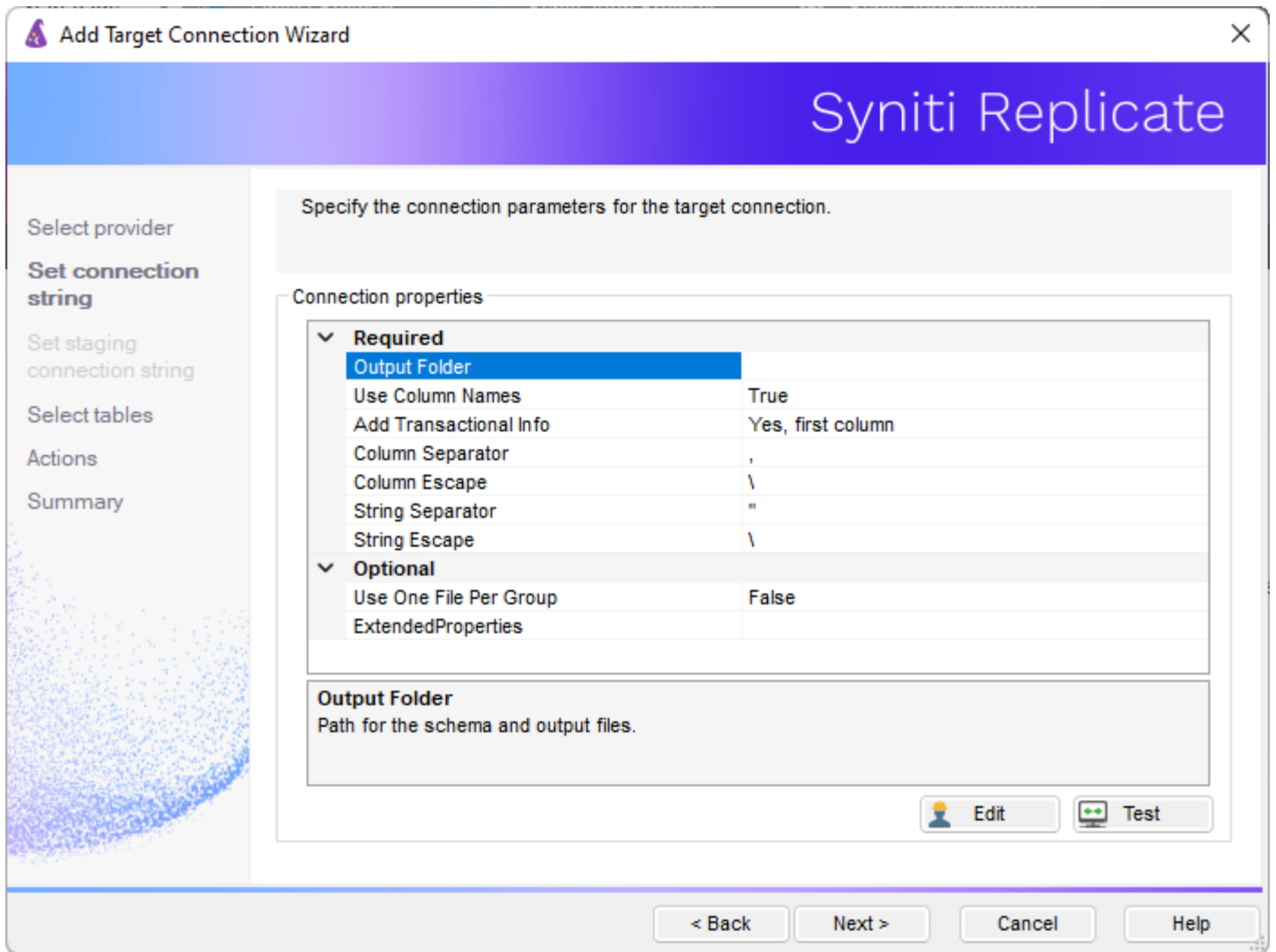


1. In the Target Connection Wizard **Provider** field, select the **Files** option.





2. Click **Next** to display the **Set connection string** screen.



3. Set the **Use Column Names** field to **False**.
4. Make sure that the **Add Transactional Info** field is set to **Yes, first column**.  
At this point, there is no text output structure available to display. You can add the information after completing the Target Connection wizard.
5. Click **Next** to display the **Summary** page.
6. Click **Finish** to complete the wizard.

## Add Table Information to the Target Connection

The target connection is displayed in the Metadata Explorer, but you still need to add the file representation for source table data so that when you create replications below, you can specify a source table and target “file.”

1. In the Metadata Explorer, expand the source connection you created above.
2. Select and drag a source table to the target file connection.

# Syniti Replicate

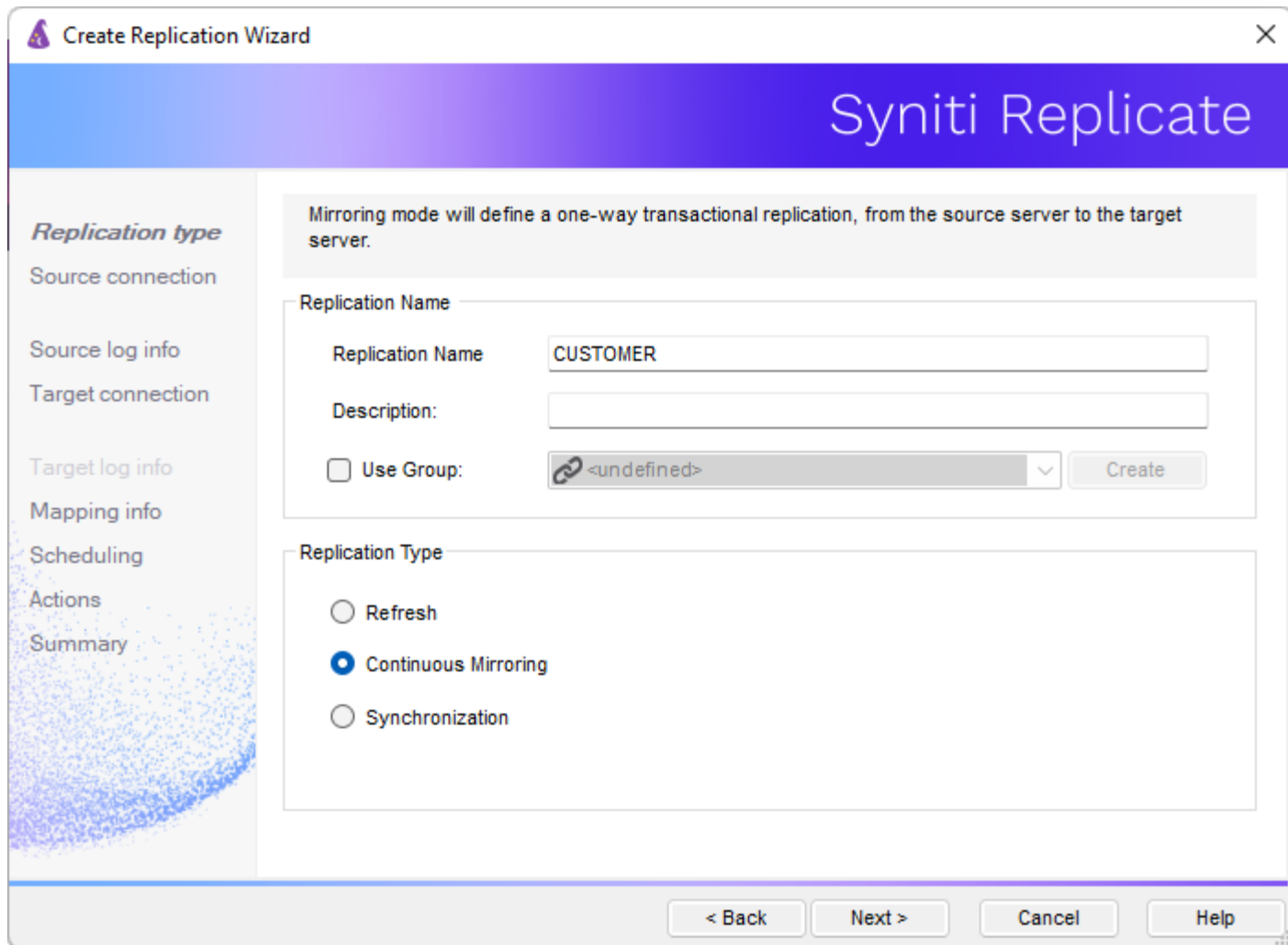
3. The Create Target Table wizard is displayed.  
Although you are not actually creating tables, you can use this wizard to create a representation of the file data.
4. In the **Source Connection** screen, you should see the source table you selected above.
5. Click **Next** to display the **Target Connection** screen.
6. Verify that the screen displays the correct target connection name, and table name.
7. Click **Next** to review the table structure.  
At this point, you can modify data types, null values and so on, if you want to modify the data eventually sent to a file.
8. Click **Next** to display the **SQL Script** screen.  
The contents of this screen are inactive because there is no editable SQL script to create a table. Instead, Syniti Replicate outputs the table information to a file.
9. Click **Next** to display the **Summary** screen.
10. Click **Finish** to create the table representation in the Metadata Explorer.
11. Click **Yes** to add the table name to the target connection entry in the Metadata Explorer
12. Repeat steps 2 through 11 for each source table that you want to replicate to a file.

At the end of this process, you should have a list of table representations under the Files target connection in the Metadata Explorer.

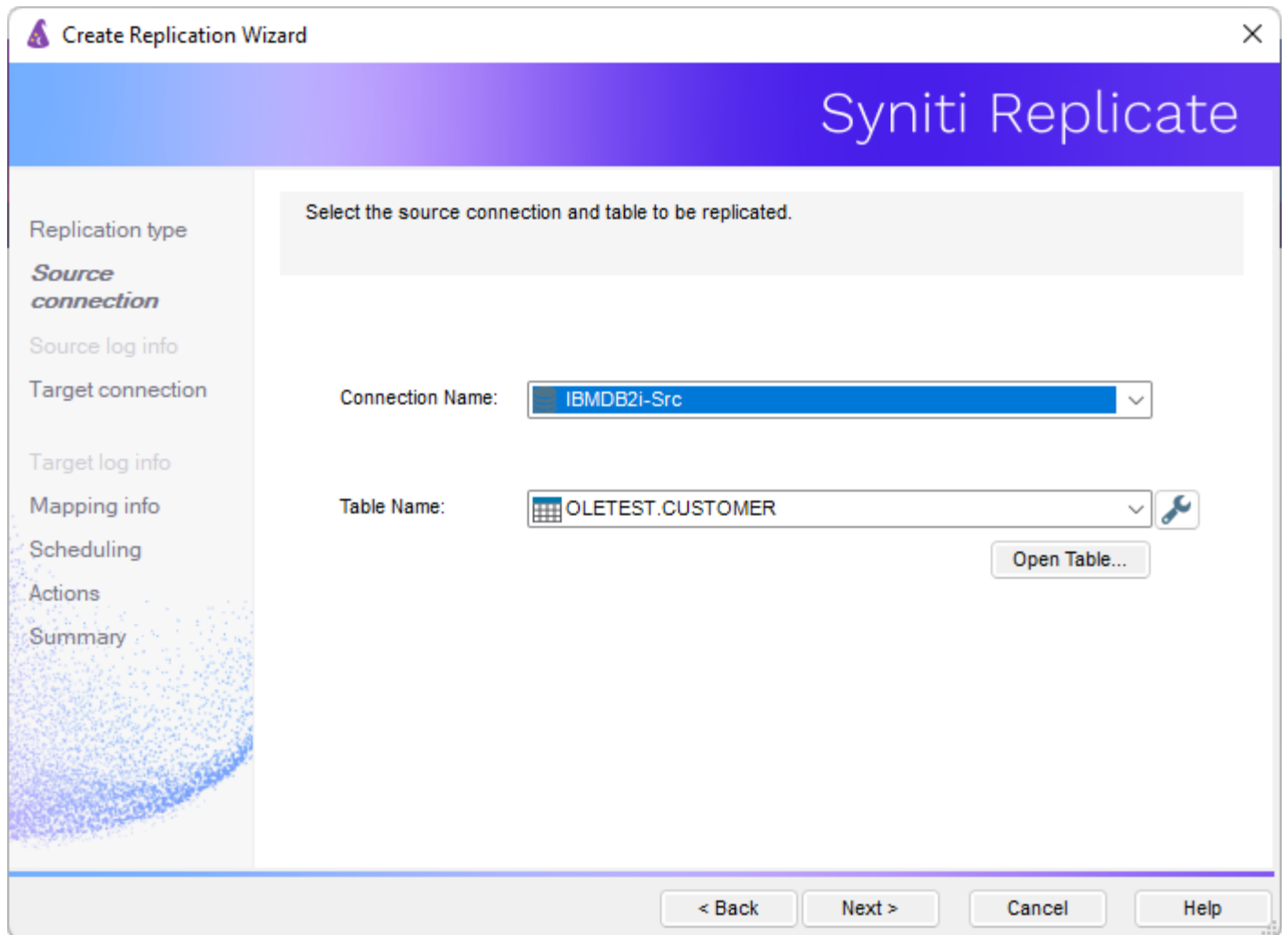
## Define the Replication

This section assumes you have checked the Create Replication wizard option to launch the Create Replication wizard. If not, to open the wizard from the Management Center, choose the table you want to replicate in the Metadata Explorer, then right-click to choose **Replication > Create New Replication...**

1. In the **Define Replication Type** screen, type a name to identify the replication.
2. Optionally provide a description of the replication.
3. In the Replication Mode area, choose **Continuous Mirroring**.



4. Click **Next** to go to the **Select Source Connection** screen.



5. Choose the source name from the drop-down list that includes all the source connections you have created.
6. Choose the table that you want to replicate from the drop-down list.
7. If you want more information about the table before proceeding, click **Open Table...**
8. Click **Next** to go to the **Source Log Info** screen.

Click Next to use the current transaction read point from the IBM i/AS400 server. To override, click Read TID to set the transaction ID from which to replicate.

Journal: OLETEST.QSQJRN

Receiver: OLETEST.QSQJRN3424

Transaction ID: 5550

Transaction Timestamp: 6/28/2022 9:42:41 PM

Read Interval (sec): 60

< Back Next > Cancel Help

The first two fields on this screen depend on the source database you are using. In this explanation, we assume you are using IBM Db2 for i (iSeries or AS/400). Check the help for the [Replication Wizard](#) for details on the other databases.

The Journal field is automatically filled in by retrieving the information from Db2 for i. The Receiver field will be automatically filled in after setting the Transaction ID. You do not need to modify these fields. However, if the library that you have specified as a source is not journaled, you will need to ask your system administrator to journal the library.


9. In the Transaction ID field, click **Read** to open the Read Point dialog.
10. Choose either the current transaction or a transaction ID based on a time and date.
11. Click **OK** to add the value to the **Source Log Info** screen.
12. Set the value of the **Read Interval** field to the frequency with which you want Syniti Replicate to check the transaction log for new events to mirror.
13. Click **Next** to go to the **Select Target Connection** screen.

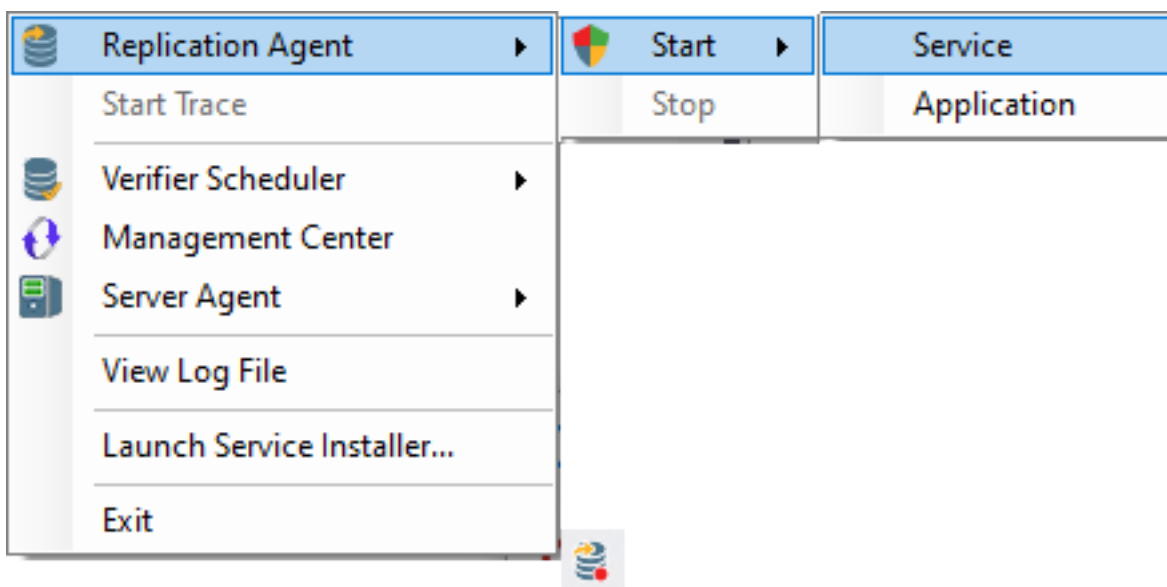


# Syniti Replicate

14. Choose the target connection for text output from the drop-down list that includes all the target connections you have created.
15. Choose the data set you want to replicate from the drop-down list.  
If the drop-down list is empty, exit the wizard and add or create a target data set.
16. Click **Next** to go to the **Set Mapping Info** screen.  
Source columns and target data with the same name are automatically mapped.
17. Set a start time for the replication. The **Start Time** field indicates the time at which the Replication Agent will begin considering the replication for execution.
18. Check the option to **Execute Initial Refresh**.  
A full replication will be performed from the source table to the data file, prior to starting the mirroring process where only incremental changes will be replicated.
19. Go to the Mirroring Schedule tab.
20. Select how you want to run the replication:
  - Run Continuously: the transaction log will be checked for changes to the table using the frequency that you specified on the Set Log Info tab. Any changes will be replicated to the target table.
  - Schedule Interruptions: the replication process will run as above, except for interruptions specified when you click the Schedule button in the Scheduler dialog.
21. Make sure the **Enable Replication** option is checked. This is required for the replication to run.
22. Click **Next** to go to the **Summary** screen.
23. Click **Finish** to complete the wizard.

## Run the Replication

If you installed The Replication Agent as a service during setup, you just need to start the service using the Service Monitor program  in the Windows Notification Area.




# Syniti Replicate

The replication that you have scheduled should start at the specified time. Use the [Replication Monitor](#) tab in the Management Center to track the progress of the replication.

If you would like to install the Replication Agent as a service:

- From the Windows Desktop **Start** menu, choose **Syniti Replicate**, then **Service Installer**.
- Manage the service from Service Monitor program (located in the install folder or on the Windows **Start > Programs > Startup** menu).
- Use the Replication Monitor tab in the Management Center to track the progress of the replication.

To run the Replication Agent interactively:

- In the Windows Notification Area, select  the Service Monitor icon.
- From the right mouse button menu, choose **Replication Agent**, then **Start** then **Application**. The replication that you have scheduled should start at the specified time.
- Use the Replication Monitor tab in the Management Center to track the progress of the replication.

## Flat File Structure

Files used as a replication target or a replication source have the following structure. The file has a .mir extension when used for mirroring and a .ref extension when used for snapshot, or refresh replications.

Column	Value
1	Sequence number
2	Timestamp of transaction
3	User, if provided by the database
4	Table name
5	Operation code – one of I (Insert), U (Update) or D (Delete)
6	Previous primary key value for the database column. This is used for update operations to identify the correct record
7	Next primary key value. This is used for update operations to identify the correct record in cases where the primary key is changed during the update operation
8	Database column value

## Example File

Example filename: corp\_20150115T161123155064\_1.mir

10,2015-01-22 15:32:39.000000,, "glb", "I", , 2, "test insert"
11,2015-01-22 15:32:40.000000, " glb ", "D", 10, ,
12,2015-01-22 15:32:42.000000, " glb ", "U", 104, 104, "my updated"
13,2015-01-22 15:32:44.000000, " glb ", "U", 1, 12, "sd"