



Data Replication

Setup Notes for Replicating with IBM® Informix

Version 9.8.2



Document History

Version	Author	Date	Reviewer	Date	Comments
1	JHLorenzin	7/31/18	TLe		
2	JHLorenzin	2/3/20	TLe		
3	JHLorenzin	11/30/21	AMillalen		Copyright and formatting changes

Syniti Data Replication

Table of Contents

Connection Type.....	1
IBM Informix Settings.....	3
BLOB and CLOB Datatype Constraints.....	3
Add Source Connection Wizard	3
Select Provider Screen	3
Set Connection String Screen	3
Enable Transactional Replication Wizard.....	4
Additional Step for Synchronization Replications.....	4

Syniti Data Replication

These notes provide essential information for setting up replications using **IBM Informix**. The setup process for a refresh replication can usually be completed using the Syniti Data Replication wizards without additional documentation because it does not involve access to the Informix log. For complete details on the setup process, check the *Syniti Data Replication User Guide* available from the Management Center **Help** menu.

This guide describes the setup process using the Log Server Agent option for one-way mirroring and synchronization when replicating data from an IBM Informix database. For mirroring and synchronization replications using Informix as a source, Syniti Data Replication offers two approaches:

- **Log Server Agent:** Uses a Windows service and a Log Server component to query the Informix log for increased performance when dealing with large amounts of data.
- **Triggers:** Uses Syniti DR triggers installed on the Informix database to log changes (Ask the Technical support team via the [Help Center](#) to see if this approach would work in your application and to obtain the separate document *Setup Notes for Transactional Replications with IBM Informix Triggers*).

Connection Type

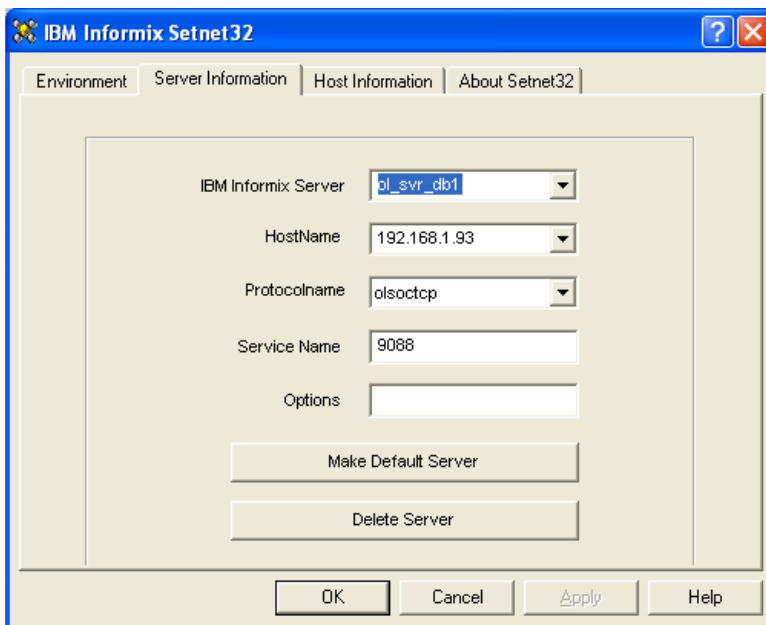
Informix .NET Provider in the latest Informix Client SDK (recommended version 4.10 or above) with the ESQL option.

Assembly: IBM.Data.Informix

Issues with Informix Provider Versions

- There appear to be some issues with later builds/FCs of the Informix 3.70 provider. Version 4.10 or above is recommended.
- There can be only one Informix provider installed the system. If other versions of the provider, such as the one installed with IBM DB2, are installed, uninstall them and restart the system.

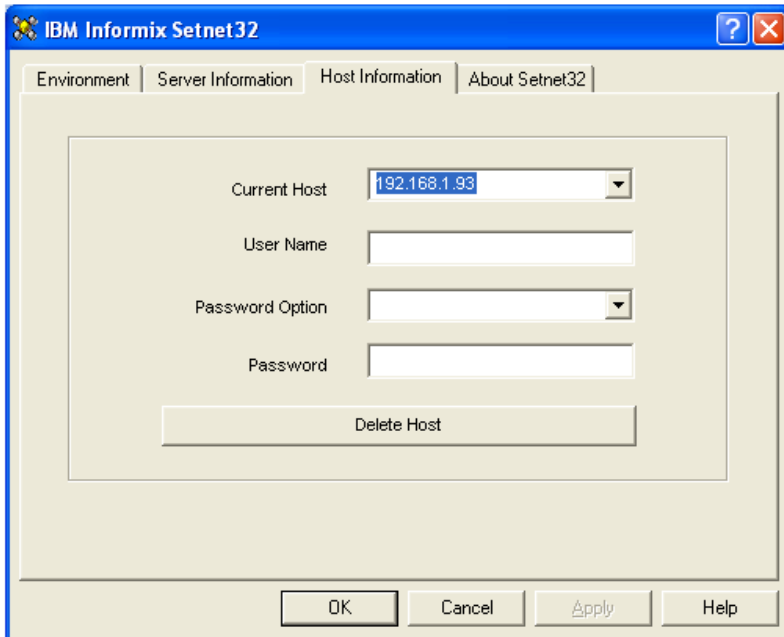
1. Run Setnet32 from All Programs-> IBM Informix Client-SDK X.XX



Copyright© 2022 by BackOffice Associates, LLC d/b/a Syniti and/or affiliates. All Rights Reserved. This document contains confidential and proprietary information and reproduction is prohibited unless authorized by Syniti. Names appearing within the product manuals may be trademarks of their respective owners.

Syniti Data Replication

2. Enter the Server Information based on your Informix Login.



3. Click **Apply**.
4. Verify the connection to the database using the ILogin.exe demo. If you are unable to connect, review the issues below to identify errors or to see if you have the correct variables set.

INFORMIXSERVER Windows System Variable

The Informix client software requires a default value to be set for INFORMIXSERVER on the client system (i.e. the system where both Syniti Data Replication and the Informix client software are installed.) The INFORMIXSERVER environment variable must specify a default database server.

DELIMIDENT Informix Database Variable Setting

Please check if there are space(s) or special characters in the schema or table name.

The variable DELIMIDENT needs to be set to YES (DELIMIDENT=YES) in the Informix database because Syniti Data Replication needs to run the following statement with double quotes on the table name when the replication is created.

```
CREATE TABLE baan."_DBM__TRG_OBJS" (SNAME VARCHAR(32), TNAME VARCHAR(128), TAG INTEGER, MASTERTBL VARCHAR(128))
```

If the variable DELIMIDENT is not set, the above query fails with a syntax error.

Informix Error Numbers and Descriptions

To look up an Informix error number: when the Informix client software is installed, a Program Group named IBM Informix Connect (or IBM Informix Client SDK) is created.

The program group includes an application called Find Error, with descriptions of all error numbers.

IBM Informix Settings

1. Ask a Database Administrator (DBA) to execute the script syscdcv1.sql that comes with the database to create the database syscdcv. The tables are required by Syniti Data Replication.
2. Make sure that the database containing the source data to be replicated was created with logging enabled. In the unlikely event that logging is not enabled, a DBA can use the ondblog utility to change the logging mode (together with the onbar utility to backup the database after the logging mode is changed.)
3. For the user ID that will be used to connect the database from Syniti Data Replication, grant CONNECT and DBA privileges both to the source database and to the syscdcv1 database. For example:
grant connect to "sdruser1"
grant dba to "sdruser1"
4. Make sure that the user ID is in the informix-admin group.

BLOB and CLOB Datatype Constraints

BLOB and CLOB datatypes are supported when using log-based mirroring with Informix as a source database. BLOB and CLOB datatypes are not supported when Informix is the target database.

Add Source Connection Wizard

Select Provider Screen

Assembly Field

Locate the file `IBM.Data.Informix.dll` in the installation folder for the Informix .NET Provider.

Set Connection String Screen

Host

Type the IP address of your Informix server.

Server

Type the name or alias of the instance of the Informix server.

Service

The service name or port number through which the server is listening for connection requests.

Database

The name of the database to which to connect within the server instance.

Protocol

A drop-down list with the default value of `olsoctcp`. Change the value according to the protocol used between the Informix .NET Data Provider and the database server.

Enable Transactional Replication Wizard

Additional Step for Synchronization Replications

After completing the Enable Transactional Replication wizard, for synchronization replications only, you also need to obtain the user ID number for the user specified in the source connection. This number will be used to edit the `_config.ini` file for the Windows service that reads the Informix log. To obtain and use the user ID number:

- Stop the Log server Agent Service for Informix
- From the command line, run the program `InformixGetUserIDNumber.exe` in the Syniti Data Replication Install directory:
- `InformixGetUserID.exe <informix-server-name> <userid> <password>`

where:

`<informix-server-name>` is name of the Informix server as defined in the source

`<userid>` the name of the user defined in the source connection

`<password>` the password for the user ID

The application outputs a number which must be manually inserted into the `_config.ini` file in the folder for the Windows service.

- In the Windows Explorer, from the Syniti Data Replication install directory, go to the Windows service folder.
- Edit the `_config.ini` file and locate the field `USER_ID_NUMBER`.
- Set the value to the number returned from your call to `InformixGetUserIDNumber` above.
- Save the file.
- Start the Windows service.